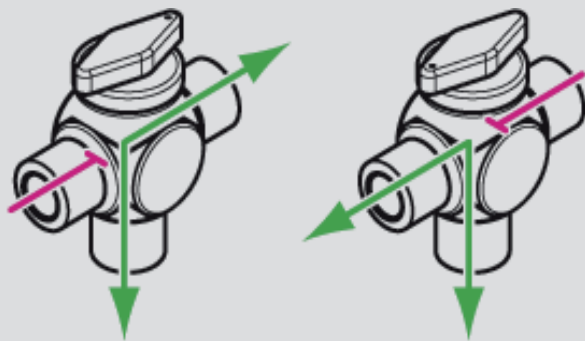


Switching Diagrams for Ball Valves

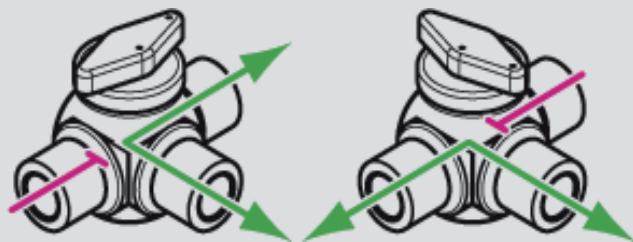
6L701 - 2-way with through bore



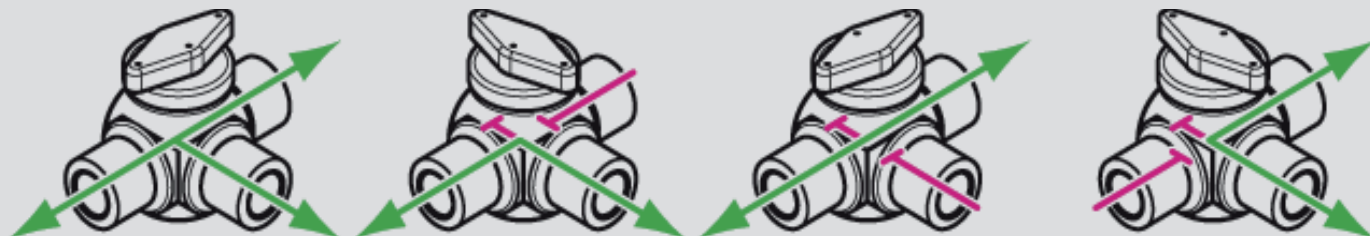
6L702F - 3-way with angled bore, vertical



6L732F - 3-way with angled bore, horizontal



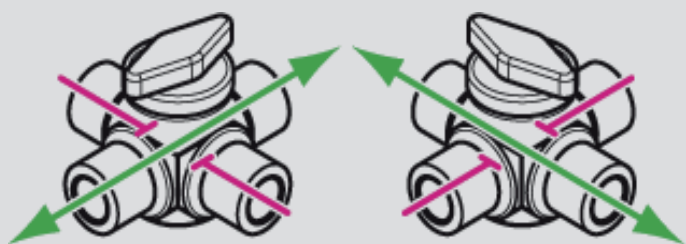
6L733F - 3-way with T bore, horizontal



6L744F - 4-way with double L bore



6L741F - 4-way with through bore



6L750F - 5-way with angled bore

